

7'er (E32)
(1985 → 1994)



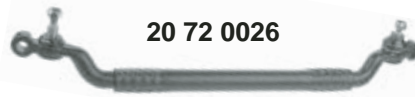
20 86 0001



20 79 0004



20 72 0026



20 69 0001



20 72 0006



20 71 0003



20 71 0002



20 72 0006



20 71 0002



20 71 0003



622



Ref. - No.



20 69 0001	32 21 1 136 452
20 71 0002	32 21 1 135 820
20 71 0003	32 21 1 135 819
20 72 0006	32 21 1 135 666
20 72 0026	32 21 1 138 850
20 79 0004	32 21 1 136 450
20 86 0001	32 31 1 115 092

Lenkhebellager / steering arm bearing
Spurstangenendstück / tie rod end
Spurstangenendstück / tie rod end
Spurstange / tie rod
Lenkstange / drag link
Lenkhebel / steering arm
Gelenkscheibe / flexible disc

LHD

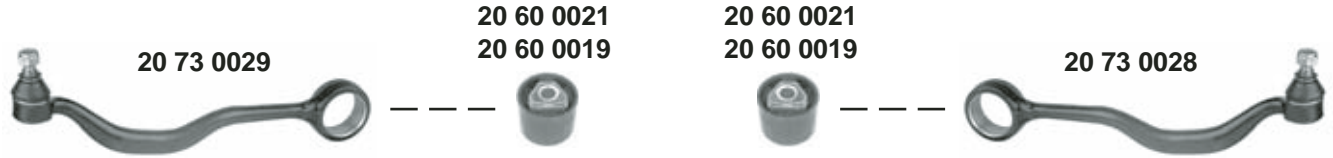
∅ A 27
M14x1,5 RHT
M14x1,5 LHT
L 303
L 525
L 125



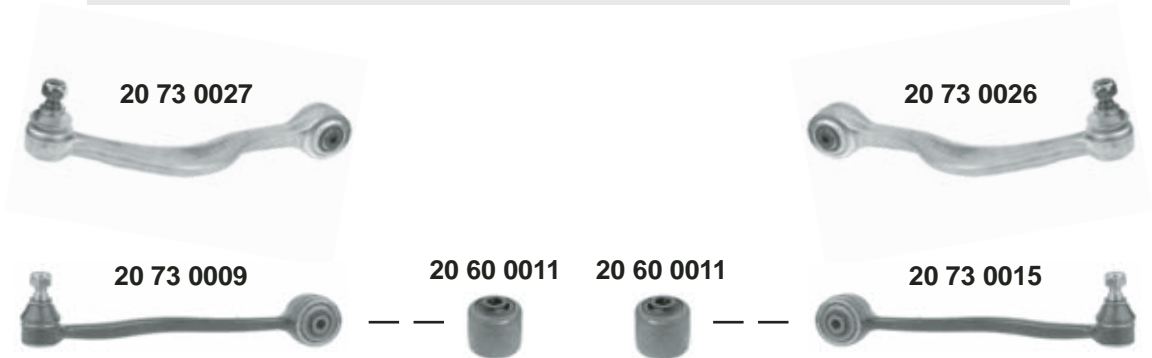
7'er (E32)
(1985 → 1994)



oben / upper



unten / lower



Ref. - No.



20 60 0011	31 12 1 124 622	Querlenkerlager / control arm mount		12x46,5x52,5
20 60 0019	31 12 1 139 456	Querlenkerlager / control arm mount		14x48x58
20 60 0021	31 12 1 136 607	Querlenkerlager / control arm mount		14x48x58
20 61 0004	31 35 1 132 786	Stabilisatorlager / stabilizer mount		24x51x60
20 73 0009	31 12 1 139 991	Querlenker / control arm		
20 73 0015	31 12 1 139 992	Querlenker / control arm		
20 73 0026	31 12 1 139 988	Querlenker / control arm		
20 73 0027	31 12 1 139 987	Querlenker / control arm		
20 73 0029	31 12 1 139 999	Querlenker / control arm		
20 73 0028	31 12 1 140 000	Querlenker / control arm		
20 79 0003	31 35 1 134 582	Verbindungsstange / connection rod		L 240
			730i/iL, 735i/iL 740i/iL, 750i/iL (ex.) M-Tech. / EDC Stahl / Steel Stahl / Steel Alu Alu	