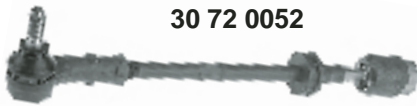




## Arosa (1997 →)



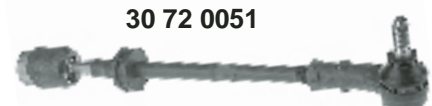
man.



30 72 0052

30 80 0065

30 80 0065



30 72 0051



30 71 0026



30 71 0025

servo



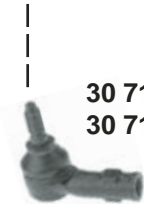
30 72 0071

30 80 0064

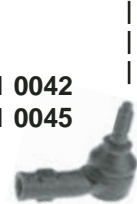
30 80 0064



30 72 0072



30 71 0043  
30 71 0044



30 71 0042  
30 71 0045



- (1) 1998 → 2003 = alle / all  
2003 → = 1,0 ; 1,4 8V; 1,7 SDi



Ref. - No.



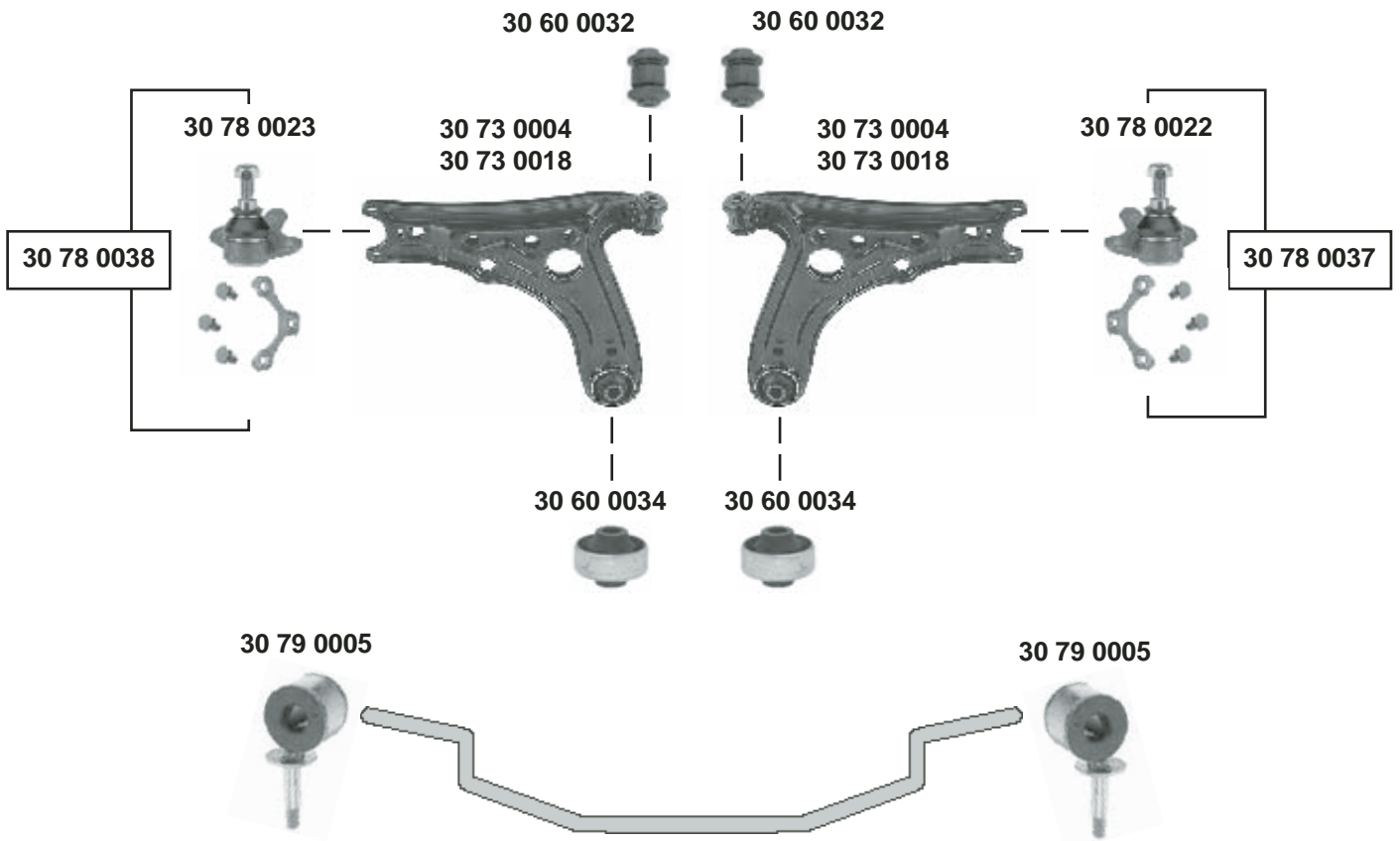
30 71 0025	6N0 419 812	Spurstangenendstück / tie rod end
30 71 0026	6N0 419 811	Spurstangenendstück / tie rod end
30 71 0042	6N0 422 812	Spurstangenendstück / tie rod end
30 71 0043	6N0 422 811	Spurstangenendstück / tie rod end
30 71 0044	6X0 422 811	Spurstangenendstück / tie rod end
30 71 0045	6X0 422 812	Spurstangenendstück / tie rod end
30 72 0051	6N0 419 804	Spurstange / tie rod
30 72 0052	6N0 419 803	Spurstange / tie rod
30 72 0071	6X0 422 803	Spurstange / tie rod
30 72 0072	6X0 422 804	Spurstange / tie rod
30 80 0064	6N0 422 831	Lenkmanschette / steering boot
30 80 0065	6N0 419 831	Lenkmanschette / steering boot

(ch.) → 6H-W-027 775  
(ch.) → 6H-W-027 775  
(ch.) 6H-W-027 754 →  
(ch.) 6H-W-027 754 →  
(ch.) → 6H-W-055 365  
(ch.) → 6H-W-055 365  
(1); (ch.) 6H-W-055 366 →  
(1); (ch.) 6H-W-055 366 →

M12x1,5  
M12x1,5  
M12x1,5  
M12x1,5



**Arosa**  
(1997 →)



Ref. - No.



**30 60 0032**  
**30 60 0034**  
**30 73 0004**  
**30 73 0018**  
**30 78 0022**  
**30 78 0023**  
**30 78 0037**  
**30 78 0038**  
**30 79 0005**

6N0 407 182  
6N0 407 181  
6N0 407 151 B  
6N0 407 151 A  
6N0 407 365 A  
6N0 407 365  
6N0 407 365 A S  
6N0 407 365 S  
6N0 411 315

Querlenkerlager / control arm mount  
Querlenkerlager / control arm mount  
Querlenker / control arm  
Querlenker / control arm  
Traggelenk / ball joint  
Traggelenk / ball joint  
Rep. Satz Traggelenk / rep. kit ball joint  
Rep. Satz Traggelenk / rep. kit ball joint  
Verbindungsstange / connecting rod

(ch.) → **6H-W-055 365**  
(ch.) **6H-W-055 366** →

für/to fit **Stabi** **A 18**

10x28x47  
17x61x46  
  
M10x1  
M10x1  
M10x1  
M10x1  
∅ I 18