



Santana (1981 → 1988)

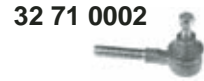
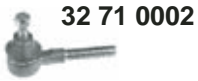
Quality Made For The World



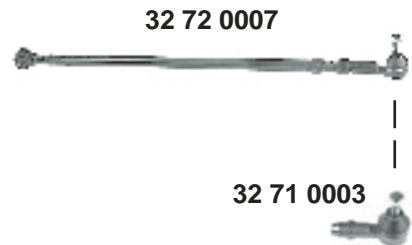
man.



(ch.) → 32-B-040 821



(ch.) 32-B-040 822 →



alle / all

32 61 0004 32 61 0004
32 61 0002 32 61 0002



32 69 0007 32 69 0007



32 73 0005



32 69 0007

32 69 0007

32 73 0005



32 78 0002



32 78 0023



32 78 0023



Ref. - No.



30 61 0010	823 411 313 A
30 80 0060	811 419 831 B
32 61 0002	811 411 327 A
32 61 0004	823 411 327 B
32 69 0007	811 407 181 A
32 71 0002	811 419 812
32 71 0003	811 419 812 A
32 72 0007	811 419 802 J
32 72 0008	811 419 801 E
32 73 0005	893 407 147 G
32 78 0002	823 407 365 E
32 78 0023	811 407 175 A

Stabilisatorlager / stabilizer mount
Lenkmanschette / steering boot
Stabilisatorlager / stabilizer mount
Stabilisatorlager / stabilizer mount
Querlenkerlager / control arm mount
Spurstangenendstück / tie rod end
Spurstangenendstück / tie rod end
Spurstange / tie rod
Spurstange / tie rod
Querlenker / control arm
Traggelenk / ball joint
Sicherungsblech / lock washer

(ch.) 32-F-390001 →
(ch.) → 32-F-390000

(ch.) → 32-B-040821
(ch.) 32-B-040822 →
(ch.) → 32-G-275000

∅ I 12,5
L 150
∅ I 20
∅ I 19
10 x 38 x 44
M10x1
M10x1
LHD
LHD
∅ A 17

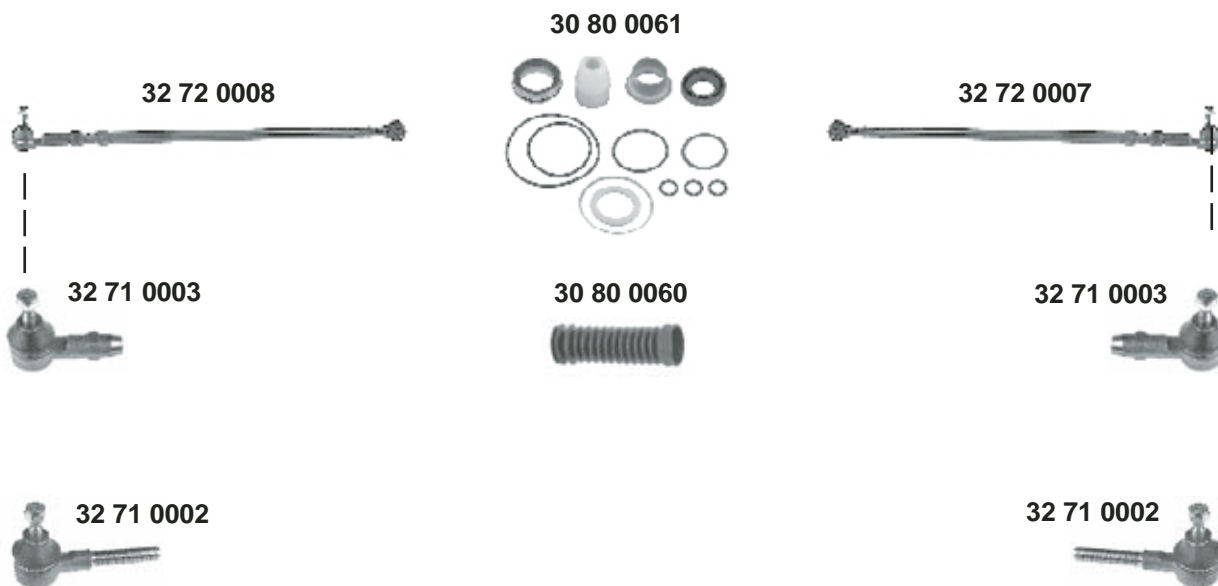


Santana (1981 → 1988)

Quality Made For The World



servo



	Ref. - No.			
30 80 0060	811 419 831 B	Lenkmanschette / steering boot		L 150
30 80 0061	811 498 020 B	Rep. Satz Servolenkung / rep. kit power steering		
32 71 0002	811 419 812	Spurstangenendstück / tie rod end	(ch.) → 32-B-040 821	M10x1
32 71 0003	811 419 812 A	Spurstangenendstück / tie rod end	(ch.) 32-B-040 822 →	M10x1
32 72 0008	811 419 801 E	Spurstange / tie rod		
32 72 0007	811 419 802 J	Spurstange / tie rod	(ch.) → 32-G-275 000	



Santana (1981 → 1988)

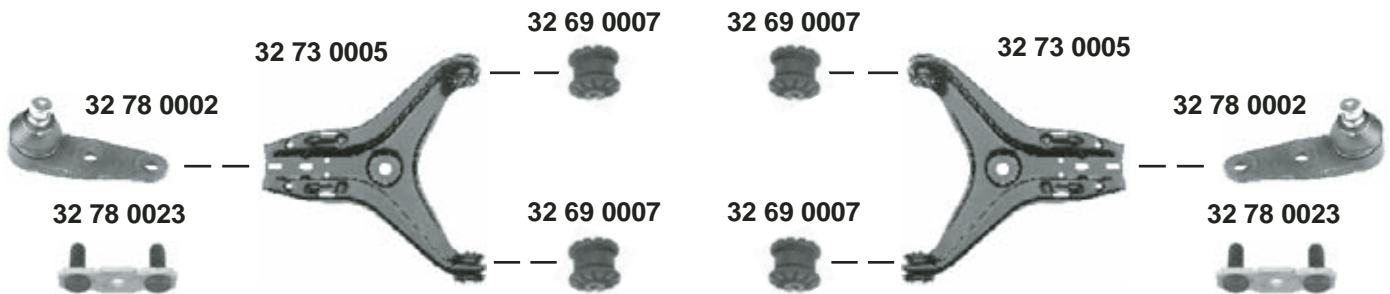
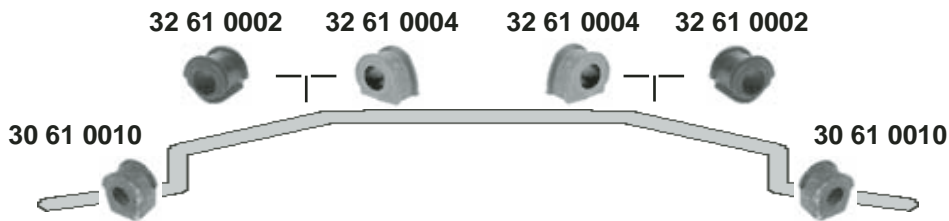
Quality Made For The World



servo



4 cyl. (ch.) → 32-E-150 000
5 cyl. (ch.) → 32-D-099 298



Ref. - No.



30 61 0010	823 411 313 A
32 61 0002	811 411 327 A
32 61 0004	823 411 327 B
32 69 0007	811 407 181 A
32 73 0005	893 407 147 G
32 78 0002	823 407 365 E
32 78 0023	811 407 175 A

Stabilisatorlager / stabilizer mount
Stabilisatorlager / stabilizer mount
Stabilisatorlager / stabilizer mount
Querlenkerlager / control arm mount
Querlenker / control arm
Traggelenk / ball joint
Sicherungsblech / lock washer

(ch.) 32-F-390 001 →
(ch.) → 32-F-390 000

∅ I 12,5
∅ I 20
10x38x44
∅ A 17



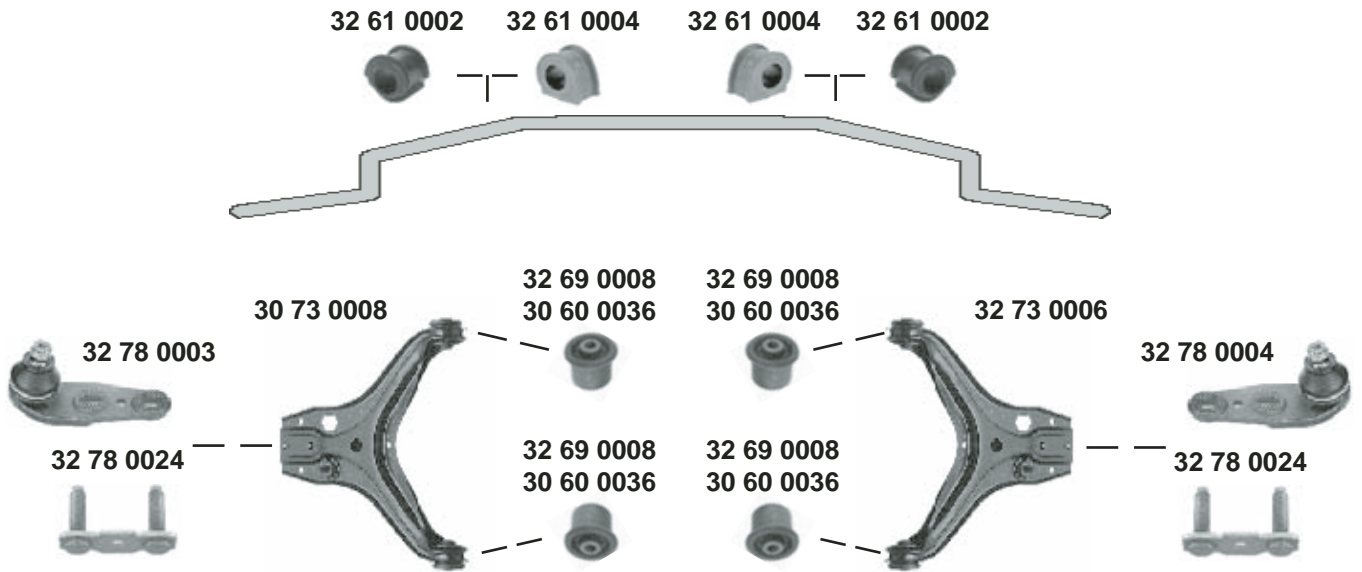
Santana (1981 → 1988)



servo



4 cyl. (ch.) 32-E-150 001 →
5 cyl. (ch.) 32-D-099 299 →



	Ref. - No.			
30 60 0036	8A0 407 181	Querlenkerlager / control arm mount	NEW	10x37x44
30 73 0008	893 407 147 C	Querlenker / control arm		
32 61 0002	811 411 327 A	Stabilisatorlager / stabilizer mount	(ch.) 32-F-390 001 →	∅ I 20
32 61 0004	823 411 327 B	Stabilisatorlager / stabilizer mount	(ch.) → 32-F-390 000	
32 69 0008	857 407 181	Querlenkerlager / control arm mount	OLD	10x37,5x44
32 73 0006	893 407 148 C	Querlenker / control arm		
32 78 0003	855 407 365 A	Traggelenk / ball joint		∅ A 17
32 78 0004	855 407 366 A	Traggelenk / ball joint		∅ A 17
32 78 0024	857 407 175	Sicherungsblech / lock washer		