



Transporter T4 (1991 → 1995)

(ch.) → 70-M-096 448

man.

30 71 0010



30 72 0011 LHD
30 72 0015 RHD



30 80 0051
30 80 0067



30 80 0051
30 80 0067



30 72 0010 LHD
30 72 0014 RHD



30 71 0009



servo

30 71 0010



30 72 0015



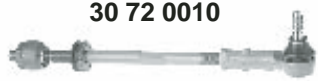
30 80 0051
30 80 0067



30 80 0051
30 80 0067



30 72 0010



30 71 0009



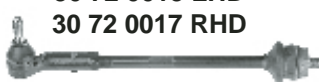
(ch.) 70-M-096 449 → 70-S-002 791

man.

30 71 0012



30 72 0013 LHD
30 72 0017 RHD



30 80 0051
30 80 0067



30 80 0051
30 80 0067



30 72 0012 LHD
30 72 0016 RHD



30 71 0011



servo

30 71 0012



30 72 0017



30 80 0051
30 80 0067



30 80 0051
30 80 0067



30 72 0012



30 71 0011



Ref. - No.



30 71 0009	701 419 812	Spurstangenendstück / tie rod end		M12x1,5
30 71 0010	701 419 811 A	Spurstangenendstück / tie rod end		M12x1,5
30 71 0011	701 419 812 A	Spurstangenendstück / tie rod end		M12x1,5
30 71 0012	701 419 811 B	Spurstangenendstück / tie rod end		M12x1,5
30 72 0010	701 419 804 C	Spurstange / tie rod		M12x1,5
30 72 0011	701 419 803 C	Spurstange / tie rod		
30 72 0012	701 419 804 D	Spurstange / tie rod		
30 72 0013	701 419 803 D	Spurstange / tie rod		
30 72 0014	702 419 804 A	Spurstange / tie rod		
30 72 0015	702 419 803 A	Spurstange / tie rod		
30 72 0016	702 419 804 B	Spurstange / tie rod		
30 72 0017	702 419 803 B	Spurstange / tie rod		
30 80 0051	701 419 831	Lenkmanschette / steering boot		
30 80 0067	7D0 419 831	Lenkmanschette / steering boot		



Transporter T4 (1991 → 1995)



(ch.) → 70-S-002 791



oben / upper

30 78 0024



30 60 0024



30 60 0024



30 78 0024



30 60 0030



30 60 0030



unten / lower

30 78 0025



30 60 0023



30 60 0023



30 78 0025



30 60 0014



30 60 0014



30 91 8654



30 79 0034



30 79 0034



30 91 8654



Ref. - No.



30 60 0014

7D0 407 140

Querlenkerlager / control arm mount

30 60 0023

701 407 183

Querlenkerlager / control arm mount

30 60 0024

701 407 077

Querlenkerlager / control arm mount

30 60 0030

701 407 087

Querlenkerlager / control arm mount

30 78 0024

701 407 187 B

Traggelenk / ball joint

30 78 0025

701 407 361 B

Traggelenk / ball joint

30 79 0034

7D0 411 049

Verbindungsstange / connecting rod

30 91 8654

701 411 049 B

Verbindungsstange / connecting rod

(ex.) ☒ Stabi 27

☒ Stabi 27

14x50x60

14x35x60

12x39x60

12x35x60

M16x1,5

M16x1,5



Transporter T4 (1995 → 2003)

(ch.) 70-S-002 792 → 70-T-199 999

man.

30 71 0014



30 72 0019 LHD
30 72 0066 RHD



30 80 0051
30 80 0067



30 80 0051
30 80 0067



30 72 0018 LHD
30 72 0067 RHD



30 71 0013



servo

30 71 0014



30 72 0066



30 80 0051
30 80 0067



30 80 0051
30 80 0067



30 72 0018

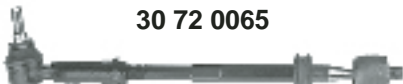


30 71 0013



(ch.) 70-T-200 000 →

30 72 0065



30 80 0051
30 80 0067



30 80 0051
30 80 0067



30 72 0064



30 71 0040



30 71 0041



Ref. - No.



30 71 0013	701 419 812 B	Spurstangenendstück / tie rod end
30 71 0014	701 419 811 C	Spurstangenendstück / tie rod end
30 71 0040	701 419 811 E	Spurstangenendstück / tie rod end
30 71 0041	701 419 812 D	Spurstangenendstück / tie rod end
30 72 0064	702 419 804 F	Spurstange / tie rod
30 72 0065	702 419 803 D	Spurstange / tie rod
30 72 0066	701 419 803 C	Spurstange / tie rod
30 72 0067	702 419 804 C	Spurstange / tie rod
30 72 0018	701 419 804 E	Spurstange / tie rod
30 72 0019	701 419 803 E	Spurstange / tie rod
30 80 0051	701 419 831	Lenkmanschette / steering boot
30 80 0067	7D0 419 831	Lenkmanschette / steering boot

OLD
NEW

M12x1,5
M12x1,5
M12x1,5
M12x1,5



Transporter T4 (1995 → 2003)



(ch.) 70-S-002 792 →



oben / upper

30 78 0024



30 60 0024



30 60 0024



30 78 0024



30 60 0030



30 60 0030



unten / lower

30 78 0025
99 91 8740



30 60 0023
30 60 0026



30 60 0023
30 60 0026



30 78 0025
99 91 8740



30 60 0014



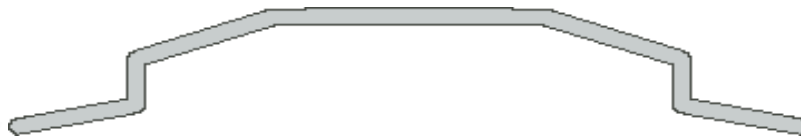
30 60 0014



30 91 8654



30 79 0034



30 79 0034



30 91 8654



Ref. - No.



30 60 0014	7D0 407 140
30 60 0023	701 407 183
30 60 0024	701 407 077
30 60 0026	7D0 407 183
30 60 0030	701 407 087
30 78 0024	701 407 187 B
30 78 0025	701 407 361 B
30 79 0034	7D0 411 049
99 91 8740	7D0 407 361
30 91 8654	701 411 049 B

Querlenkerlager / control arm mount
Querlenkerlager / control arm mount
Querlenkerlager / control arm mount
Querlenkerlager / control arm mount
Querlenkerlager / control arm mount
Traggelenk / ball joint
Traggelenk / ball joint
Verbindungsstange / connecting rod
Traggelenk / ball joint
Verbindungsstange / connecting rod

(ch.) → 70-T-199 999

(ch.) 70-T-200 000 →

(ch.) → 70-T-199 999

(ex.) ☒ Stabi 27

(ch.) 70-T-200 000 →

☒ Stabi 27

14x50x60
14x35x60
12x39x60
14x41x60
12x35x60
M16x1,5
M16x1,5

☒ I 27