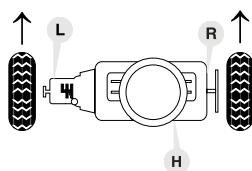


passend für / to fit

# CITROEN

## ZX

(1991 → 1997)



L

R

H

1.1 (mot. TU1 / TU1M / TU1M+)		-	64 13 0007	-
1.3 (mot. TU3-2 Guss)		-	64 13 0004	-
1.3 (mot. TU3-2 Alu)		-	64 13 0007	-
1.4 (mot. TU3M / TU3MC / TU3JP)		-	64 13 0007	-
1.4 D (mot. TUD3)		-	64 13 0007	-
1.5 D (mot. TUD5)		-	64 13 0004	- <sup>❶</sup> 62 13 0002 <sup>❸</sup>
1.6 (mot. TU5JP / XU5M)	(ch.) → O 05732 (ch.) O 05733 →	62 13 0005 64 13 0005	64 13 0004 64 13 0004	- -
1.8 (mot. XU7JP)	(ch.) → O 05732 (ch.) O 05733 →	62 13 0005 64 13 0005	64 13 0004 64 13 0004	- -



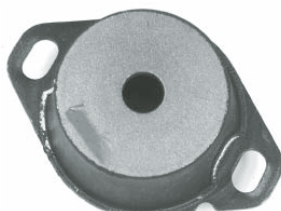
**❶** für Motorträger  
for engine bracket  
pour traverse de moteur  
para soporte de motor  
per supporto motore

**❸** für Gabelgelenk  
for eye joint link  
pour articulation à chape  
para articulación de horquilla  
per snodo a forcella

**SWAG 62 13 0002**  
Ref. No. 1809.04



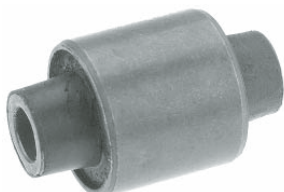
**SWAG 62 13 0005**  
Ref. No. 1843.95



**SWAG 62 13 0006**  
Ref. No. 1809.21



**SWAG 64 13 0001**  
Ref. No. 1809.22



**SWAG 64 13 0004**  
Ref. No. 1844.42



**SWAG 64 13 0005**  
Ref. No. 1844.36



**SWAG 64 13 0007**  
Ref. No. 1844.72

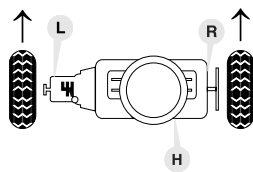


passend für / to fit

# CITROEN

## ZX

(1991 → 1997)



Quality Made For The World

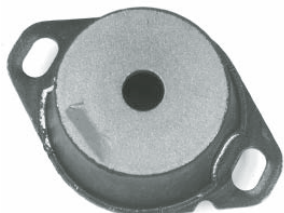
		L	R	H
<b>1.8 16V</b> (mot. XU7JP4)		64 13 0005	–	62 13 0006 <b>1</b> 64 13 0001 <b>3</b>
<b>1.8 D</b> (mot. XUD7)	(ch.) → O 06264	64 13 0005	–	– <b>1</b> 64 13 0001 <b>3</b>
	(ch.) O 06265 →	64 13 0005	–	62 13 0006 <b>1</b> 64 13 0001 <b>3</b>
<b>1.9</b> (mot. XU9JA / XU9JAZ)	(ch.) → O 05732	62 13 0005	–	62 13 0006 <b>1</b> 64 13 0001 <b>3</b>
	(ch.) O 05733 →	64 13 0005	–	62 13 0006 <b>1</b> 64 13 0001 <b>3</b>
<b>1.9 D</b> (mot. XUD9)	(ch.) → O 06264	64 13 0005	–	– <b>1</b> 64 13 0001 <b>3</b>
	(ch.) O 06265 →	64 13 0005	–	62 13 0006 <b>1</b> 64 13 0001 <b>3</b>
<b>1.9 TD</b> (mot. XUD9TE)		64 13 0005	–	62 13 0006 <b>1</b> 64 13 0001 <b>3</b>
<b>2.0</b> (mot. XU10J2)		64 13 0005	–	–
<b>2.0 16V</b> (mot. XU10J4)		64 13 0005	–	–
<b>2.0 16V</b> (mot. XU10J4RS)		64 13 0005	–	–



**1** für Motorträger  
for engine bracket  
pour traverse de moteur  
para soporte de motor  
per supporto motore

**3** für Gabelgelenk  
for eye joint link  
pour articulation à chape  
para articulación de horquilla  
per snodo a forcella

**SWAG 62 13 0005**  
Ref. No. 1843.95



**SWAG 62 13 0006**  
Ref. No. 1809.21



**SWAG 64 13 0001**  
Ref. No. 1809.22



**SWAG 64 13 0005**  
Ref. No. 1844.36

